



# Walther Wolf

Innovation und Qualität - aus Tradition

# Welcome

Mould  
making

Measurement  
laboratory

Plastics  
technology

Engraving  
technology



From the idea to the finished product - we provide everything

[www.waltherwolf.de](http://www.waltherwolf.de)



## Our focus is on the human being.

Motivated and trained specialists are necessary for sustainable innovations.

Our employees are integrated into business procedures and create the foundation for our success through, for example, equitable communication structures and constructive teamwork.

Many of our employees have therefore, and also due to our good and collegial working atmosphere, remained true to Walther Wolf for decades.

**Quality** is measured in the fulfilling of the optimum.

Here, in addition to state of the art technology and decades of experience, we trust in good communication with our customers.

This is because our clients are accompanied by one of our technically competent account managers over the entire course of a project. Changes and deviations can therefore be discussed immediately and solutions be found without major detours. This allows us to already optimise our quality during the production process.

**Tradition** has meant correct dealings with all people since 1907. This was, is and remains important to us.



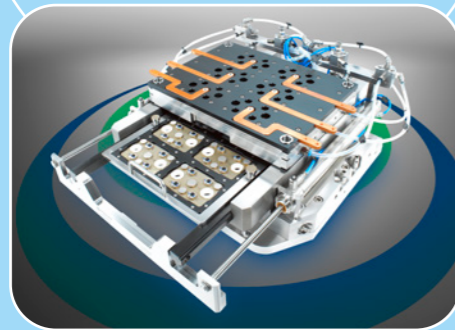
From the idea to the finished product - we provide everything

Fan wheel of a respirator

[www.waltherwolf.de](http://www.waltherwolf.de)

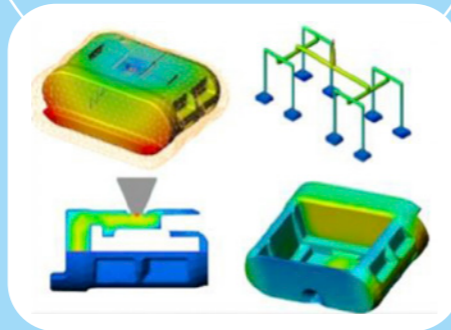


## Tool garden



We build Duroplast tools, high temperature tools and tools for insert technology, multi-component tools, ECM tools and turntable tools.

## Injection moulding simulations



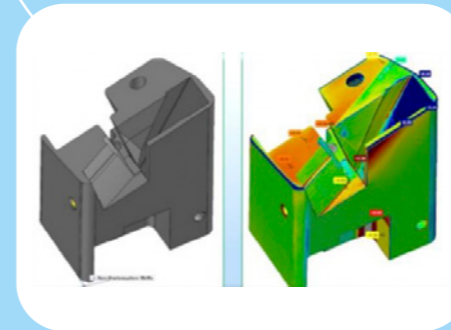
We create injection moulding simulations with SOLIDWORKS Plastics. As a result, we can carry out rheological and thermodynamic predictions for both crystallising and networking plastics with regard to filling and warpage.

## External tools



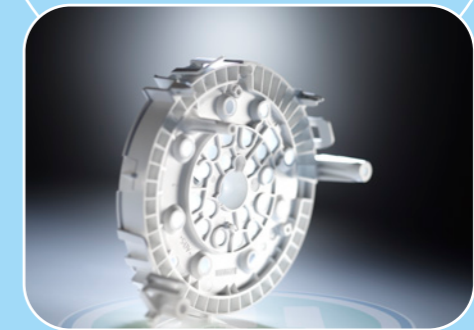
We repair, change, re-dimension, maintain and look after the necessary replacement parts.

## Reverse Engineering



We generate reusable CAD data on the basis of measurement and restoration.

## Service

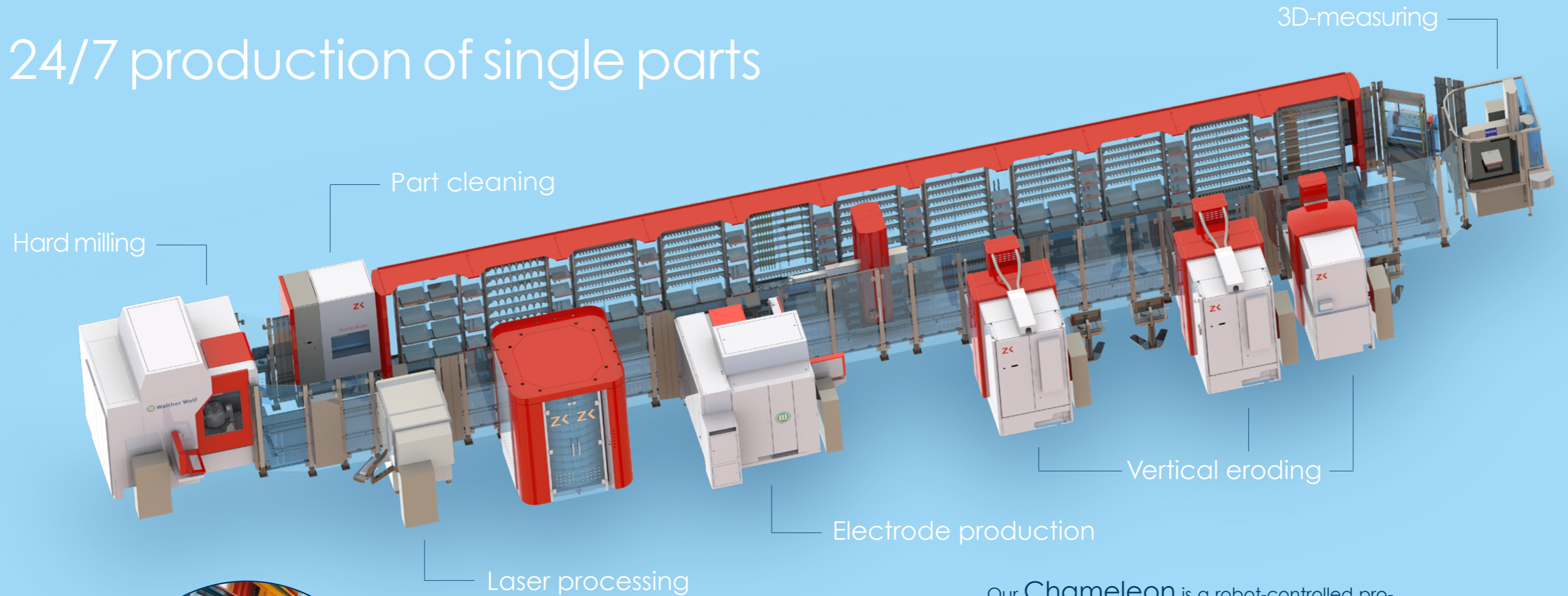


We offer training seminars, commissioning and process accompaniment for tool and injection moulding technology. Also outside of Germany on request.

From the idea to the finished product - we provide everything

[www.waltherwolf.de](http://www.waltherwolf.de)

## 24/7 production of single parts



Our **Chameleon** is a robot-controlled production system with a length of 26 m.  
The following works fully automated within it:

- 2 milling machines,
- 3 vertical eroding machines,
- 1 laser machine,
- 1 washing machine,
- 1 measuring machine and
- 12 magazine cabinets.

From the idea to the finished product - we provide everything



## 3D coordinate measuring



For tactile measurements, we use 4 Zeiss 3D coordinate measuring machines. For series measurements or large components, we have a maximum travel route in Y of 2,400 mm at our disposal.

## Optical measuring



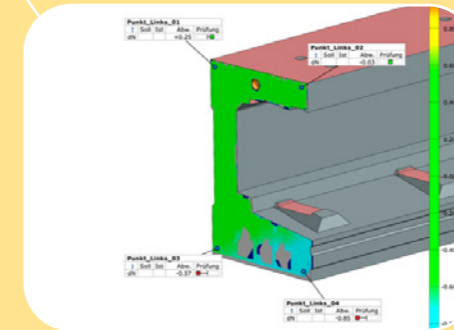
Our Verth Video Check system multi-sensor coordinate measuring device is always used when a combination of several measuring processes makes sense or unusual materials are involved.

## Digitalisation



We use the ATOS III Triple Scan from GOM as an optical digitaliser. Through additional measures, we are capable of offering you greater basic precision in comparison with the individual system. We can also offer you introductory training seminars for the GOM inspect software if you would like to use this yourself on your own premises.

## Photogram- metry



Our TRITOP GOM system of the latest generation is exceptionally well-suited for large components. To this purpose, we come to you with our measurement system and measure on location. The largest parts we have measured had dimensions of 12 m with a measurement precision of 0.02 mm.

From the idea to the finished product - we provide everything

[www.waltherwolf.de](http://www.waltherwolf.de)



## TOMOSCOPE XS PL 160

Our CT scanner is conceived of for small parts and precise measurement results. In order to be able to offer series parts economically and with the shortest delivery times, a 5-fold pallet changer has been integrated.

The CT is calibrated according to the following norms:

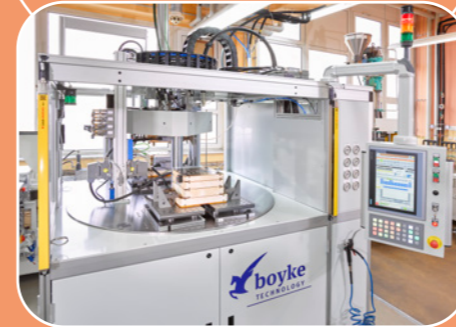
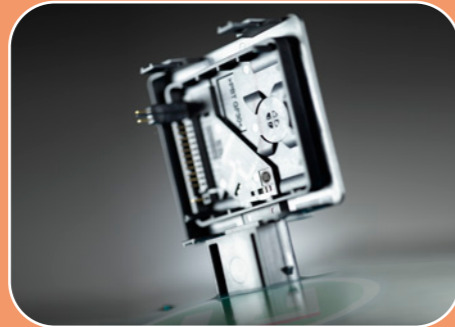
- VDI/VDE 2617 sheet 13
- DAkkS-DKD-R 4-3 sheet 18.1

From the idea to the finished product - we provide everything

[www.waltherwolf.de](http://www.waltherwolf.de)

Thermoplast

Duroplast



An Arburg 520C (2,000 kN) and an Arburg 320C (600 kN) are available for internal sampling and small seriesg.

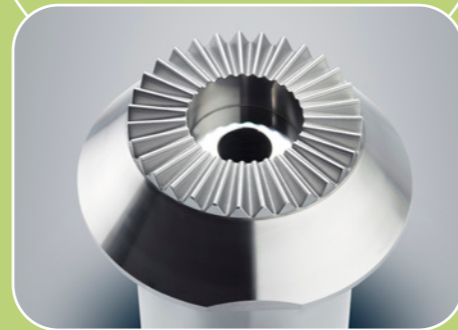
With our new Boyke turntable transfer press, we are expanding our tool expertise in the field of Duroplast to sampling and series parts.

From the idea to the finished product - we provide everything

[www.waltherwolf.de](http://www.waltherwolf.de)

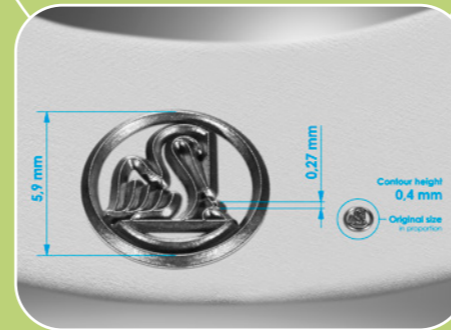
# Engraving technology

Longer  
service life



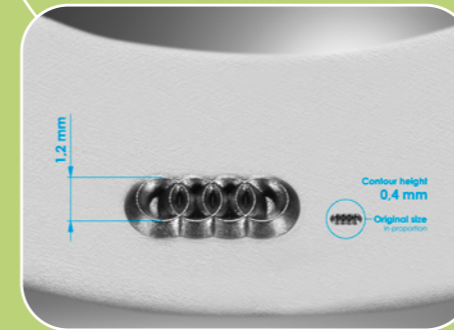
Thanks to our newly developed processing methods, you will find no microcracks of any kind in the basic material. The layer in the peripheral areas is also considerably minimised in comparison to milling or eroding processing. The result is that the positive properties of the basic material are much more apparent.

More  
delicate contours



With our processing, we can form the smallest contours in great detail. The usual restrictions resulting from the size of milling radii or a slurring of the contours caused by vertical eroding do not apply.

Greater con-  
tour fidelity



Because we move without difficulty within a total tolerance of less than  $5 \mu$ , the shaping of your texts, logos and 3D contours can be better adapted to your desired end result.

From the idea to the finished product - we provide everything

[www.waltherwolf.de](http://www.waltherwolf.de)





# Walther Wolf

Innovation und Qualität - aus Tradition



Quality management  
According to  
DIN EN ISO 9001:2015 Certified



Environmental management  
According to  
DIN EN ISO 14001:2015 Certified



Measurement laboratory management  
According to DIN EN ISO 17025:2018  
Your accreditation process

Project management  
According to Six Sigma (Green Belt + Black Belt)  
Trained employees

Process management  
According to Six Sigma DMAIC and  
PDCA cycle



Occupational safety management  
According to  
DIN EN ISO 45001:2018  
integrated into DIN 9001:2015

Energy management  
According to DIN EN ISO  
50001:2018  
Integrated into DIN 14001:2015

# Quality

Thinking outside the box



From the idea to the finished product - we provide everything

[www.waltherwolf.de](http://www.waltherwolf.de)



# Tradition

with a view to now



Mould making

Measurement laboratory

Plastics technology

Engraving technology

**1907** Founding of the company

Innovation and quality - out of tradition have always been the motivating forces at **Walther Wolf**. The craft business founded in 1907 therefore developed into a high-tech company for mould making, measurement and engraving technology over the course of decades.

For approx. 50 years now, **Walther Wolf** has been a specialist for complex and highly precise parts in the free-form surface sector.



**Walther Wolf**

Innovation und Qualität - aus Tradition



Jochen Dorlöchter  
(Managing Director)

**Walther Wolf GmbH**

Richtweg 37

D-90530 Wendelstein

tel.: +49 9129 9008 0

mail: [info@waltherwolf.de](mailto:info@waltherwolf.de)

From the idea to the finished product - we provide everything

[www.waltherwolf.de](http://www.waltherwolf.de)